

COMPASS REVIEW

PACIFIC LUTHERAN COLLEGE

Call 5436 7300
Woodlands Boulevard,
Meridan Plains 4551

www.pacificlutheran.qld.edu.au



PACIFIC
LUTHERAN
COLLEGE

Together we grow for a better tomorrow.



FUTURE

THINK

PACE

PERMA

MISSION

ART

LANGUAGE

HOSPITALITY

MUSIC

TECHNOLOGY

PEOPLE, THE FOCUS.
LEARNING, THE PURPOSE.
CHRIST THE WAY.

PACIFIC LUTHERAN COLLEGE

is a Kindergarten to Year 12 independent school that provides a rich education for a well-rounded life. With a strong focus on academic learning and underpinned by Christian values, Pacific Lutheran College provides excellent opportunities for growth through its personal development, outdoor education, pastoral care, sporting and cultural programs.

Strong relationships are an important part of this innovative learning community where curiosity, imagination, deep understandings and personal excellence are nurtured.

READY FOR 2020?

By Dr Bronwyn Dolling, Principal



We are in an era of considerable social change and as a result, the work related skills that people will need in the future are evolving. The Institute For The Future (ITFF, 2011) identified six drivers that they predicted would change the nature of skills required by work forces by 2020.

They argued that people living longer, sophisticated workplace automation that removed repetitive jobs, the capacity to use data on a much larger scale, the rise of visual media as a new vernacular, super structured organisations that use social media to work at extreme scales and a globally connected world where power has become more widely spread would drive significant change in the work place.

We are almost half way through this period and it is useful to reflect on how important their 10 nominated skills have become.

- ◆ Sense Making: Ability to determine the deeper meaning or significance of what is being expressed.
- ◆ Social Intelligence: Ability to connect to others in a deep and direct way, to sense and stimulate reactions and desired interactions.
- ◆ Novel and Adaptive Thinking: Proficiency at thinking and developing solutions and responses beyond what is rote or rule based.
- ◆ Cross Cultural Competency: Ability to operate in different cultural settings.
- ◆ Computational Thinking: Ability to translate vast amounts of data into abstract concepts and to understand data based reasoning.
- ◆ New Media Literacy: Ability to critically assess and

develop content that uses new media forms and to leverage these media for persuasive communication.

- ◆ Transdisciplinary: Literacy and ability to understand concepts across multiple disciplines.
- ◆ Design Mindset: Ability to represent and develop tasks and work processes for desired outcomes.
- ◆ Cognitive Load Management: Ability to discriminate and filter information for importance and to understand how to maximise cognitive functions.
- ◆ Virtual Collaboration: Ability to work productively, drive engagement and demonstrate presence as a member of a virtual team.

As I reflect on this list as an educator, they are all proficiencies required for an effective teacher in 2015. I would suspect for many occupations the response would be the same. Businesses too require these capacities in a changing market place where global factors impact on local decisions.

Pacific Lutheran College's approach to teaching and learning immerses young people in a culture of thinking that grows these capacities and at the same time draws on the wisdom of the millennia in enhancing wellbeing and the growth of our spiritual selves in relationship to God. Staff and students need to have the capacity to reflect wisely, discern possible ways forward and then have the character to act towards better outcomes even when first efforts result in failure. There is a requirement for creativity, flexibility, discernment and persistence. We are in a constant cycle of reflection and action as we create new ways of being. Knowing that God walks with us there is joy and optimism in the journey!

(ITFF, 2011, Future Work Skills 2020, viewed 30th June 2015, http://www.iftf.org/uploads/media/SR-1382A_UPRI_future_work_skills_sm.pdf)

RETHINKING THINKING

By Ms Sue Arahill, Director of Teaching and Learning

How many times in a day would you use the word, 'think'? Perhaps you say, "I think I'll get a coffee" or "What do you think about this?" or "Let me think about that for a moment"? Certainly, we use the word quite a lot, but do we really understand what it means to think?

As educators, we often say that we want our students to think: think more, think harder, think seriously, or think deeply. In fact, thinking has many meanings to our students and us.

At the start of this year, Pacific Lutheran College staff members were challenged to examine their own ideas about thinking, under the expert guidance of world-renowned Harvard educator, Mark Church. Mark is a consultant for Harvard University Project Zero, including Culture of Thinking and Teaching for Understanding Initiatives and Visible Thinking Routines. Working with staff, Mark provided stimuli and resources to unpack what thinking means and what it looks like in the different contexts of contemporary classrooms.

Staff explored ways to enhance a culture of thinking, themselves examining different types of thinking such as thinking creatively, thinking critically and discussing notions of truth and fairness. By engaging in Visible Thinking Routines, staff members were able to identify explicit thinking behaviours and discover just what 'thinking' looks like!

The opportunity to learn from Mark's expertise, energy and enthusiasm was highly valued and our staff are thrilled to have established an ongoing professional collaboration with Mark that will enable us to continue to work with him over a number of years. Already, students are discovering powerful ways to not only tailor their thinking but to quantify and document it - making thinking visible on classroom walls, online and in assignment and practical work. It is an exciting time, don't you think?

“ALREADY, STUDENTS ARE DISCOVERING POWERFUL WAYS TO NOT ONLY TAILOR THEIR THINKING BUT TO QUANTIFY AND DOCUMENT IT”.



KEEPING PACE AT PACIFIC LUTHERAN COLLEGE

By Mrs Rae Hall, Head of Teaching and Learning – Middle College

Active and curious minds worked together this semester in the Middle College's PACE program. Twenty of our keenest Year 6 and 7 Science students worked with mentor, Mrs Claire Richards, to explore electronics.

Students set out to understand the importance of design in creating a functional circuit. They engaged in numerous explorations of electronic componentry and built and reflected on the function of snap circuits.

To culminate their investigations, students designed and tested their own circuits, which had to perform an authentic task such as an intruder alarm or a doorbell. They reflected on their designs and refined their products before taking them home to share with their families.

Year 6 student, Dempsey Hall said it was, "an amazing experience to be able to explore how adapters and circuitry components worked to make items we use everyday. It was really engaging."

The Year 8 and 9 PACE Maths students immersed themselves in cryptology, again under the guidance of Mrs Claire Richards. Students learnt to encrypt and decrypt messages and investigated the maths concepts associated with cyphers.

Year 9 student, Ryan Smart said that PACE had been, "enjoyable and challenging. It made us think about how cryptology fits in to everyday life."



Another highlight in the PACE calendar this year was our participation in Camp Buranga. The camp brings together gifted and talented students from independent schools across the coast for two days of intense workshops. Twelve of our Year 6 students represented us in the five areas of Maths, Science, Writing, Vocal and Art.

Student, Imogen Layfield attended the writing workshop. Imogen said Camp Buranga, "was a great experience allowing me to write in a range of styles and produce my very own e-mag. It was fun and meeting other students and mentors was a highlight."

Pacific Lutheran College teacher, Amanda Empson joined the Camp Buranga team this year as the lead Science mentor and said the camp, "was an excellent experience for the staff and students to come together and explore, design and test their thinking on a prototype before making the necessary revisions to their final design."

We look forward to the Semester 2 PACE projects in Writing, Robotics, Maths and Science.

PACE (Pacific Academic Challenge and Enrichment) provides opportunities for talented Middle College students to work with like-minded peers on a range of enrichment activities in Mathematics, Science and Technology and Literature.

PERMA AT PACIFIC LUTHERAN COLLEGE

By Mr Brendan Delaney, Director of Students

During the first semester this year, our staff members have been discussing how to apply Dr Martin Seligman's PERMA formulation for wellbeing. So, what does PERMA stand for? Positive emotions, Engagement, Relationships, Meaning and Accomplishment.

PERMA is at the centre of research investigating wellbeing and how individuals can lead a fulfilling and satisfying life. Dr Seligman coined the term 'flourish' to

describe someone who has optimised his or her level of wellbeing. They experience positive emotions, enjoy healthy relationships and have high levels of engagement, meaning and purpose.

Therese Joyce, an expert in positive psychology and transformational leadership from the University of Melbourne, led the staff in-service day at the beginning of Term 2. Staff discussed and reflected on PERMA and explored the range of opportunities that it provides our students and the wider community. →



Further, they brainstormed ideas on how to improve the wellbeing of those in our community including students, families and staff. An everyday wellbeing toolkit can include a gratitude journal, mindfulness practice, positivity portfolios, ways to check your level of flow, random acts of kindness, gratitude letters, personal mission statements and a map of your life.

Since the presentation, Pacific Lutheran College has completed an audit, assessing the things we already do that fit under PERMA, and we found many! A new wellbeing staff group has also been established to oversee the growth of wellbeing throughout the community. Their first task is to review the audit to see where we are growing and what areas can be nurtured. The team's overall goal is to see all members of our community 'flourish' into the future.

A MAN ON A MISSION WITH GOD - JOSH GRIMLEY

By Pastor Paul Smith, College Pastor

In the second week of Term 2, past student, Josh Grimley amazed and inspired the community at the Middle/Senior chapel with his awesome message on 'choices'.

Josh was a member of our most recent Year 12 class, graduating in 2014. Throughout his years at Pacific Lutheran College, he became more and more 'at home' in his Church, developing leadership skills and connecting with young people.

This year, Josh is undertaking ministry training. He has taken the opportunity to deepen his understanding of God's message of life and salvation in Jesus Christ and is learning how to communicate this good news. If you wanted to know how Josh was going with his training,

just ask the students in chapel that day. Josh was funny, engaging, insightful and challenging. Josh knew his stuff and believed that his message would change lives.

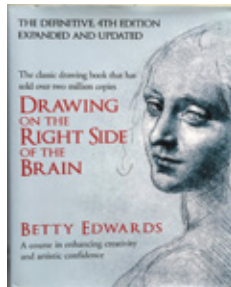
So, what was his message? Josh highlighted the difference between making good, life giving choices and choices that are not so good. God calls us to choose His way to make the world a better place.

On the day, Josh had team members from his Church come along to provide encouragement and support. We wish Josh well in his studies this year. He has said he will come back to Chapel at Pacific Lutheran College and we know that he will be warmly welcomed and deeply appreciated. God bless you, Josh Grimley.



CROSSING BORDERS IN ART

By Mrs Denise McMahon, Head of Visual Art



Crossing Borders is a 10 week art course designed to improve Year 8 student's visual perception. It is based on the theories of Dr Betty Edwards and her book titled 'Drawing on the Right Side of the Brain'.

Crossing Borders was conceived two years ago and was developed into a course through peer consultation and research with teachers and Year 6-8 students. In 2014, the course was implemented to the entire Year 8 cohort.

The title Crossing Borders is adapted from an artwork by Cai Guo Qiang (China) called 'Crossing The Bridge' (Gallery of Modern Art, 1999). It was part of a collection where artists exhibited works where they literally crossed borders in their life and their work. As our students embark on the Crossing Borders course, they experience new connections as they learn to adapt to change and learn to 'see' in a new way. They learn to engage both their right and left-brain for all subjects.

The course is designed around Dr Betty Edwards' lifetime research, which defines drawing as a skill or a tool to enhance visual perception. By improving a child's visual perception, it changes the brain's way of thinking and problem solving.

Through drawing, students learn about the perception of edges, spaces, relationships and light and shadow.

The Crossing Borders unit is not about teaching drawing skills. It is about enhancing student's visual perception by consciously engaging the right side of their brains. The knowledge students develop from drawing can then 'cross over' to other subjects, where they can use their newly heightened perception.



JAPANESE CLASSROOM BECOMES CULTURAL HUB

By Mrs Michiko Hauser, Head Year 6-12 Japanese



This year marks a milestone in Japanese at Pacific Lutheran College. In 2015 we celebrate the 10th year of our relationship with Seishin Gakuen, our sister school located in Kashima City of Ibaraki Prefecture in Japan.

Over the June/July school holidays, 20 students and four staff members travelled to Japan to continue strengthening our important connection with Seishin Gakuen.

This year, the classroom has been transformed into a cultural learning hub and by incorporating visible thinking routines into the curriculum, Japanese at Pacific Lutheran College has developed strongly. This has allowed students to learn and reflect on the Japanese language and culture more than ever. The growing numbers in our senior classes also reflects the successes Japanese has had in experimenting with new technology and software in the classroom.

Our Japanese Teacher Assistants continue to provide authentic opportunities for our students to practise their skills and test their proficiency. In the near future, we look forward to taking advantage of video conferencing to provide further opportunities for our students to interact with our friends at Seishin Gakuen on a regular basis.

Pacific Lutheran College's Japanese program not only teaches language skills but it also provides opportunities for our students to develop strong intercultural understandings of the region.

HOSPITALITY CREATING RECIPES FOR SUCCESS

By Mrs Colleen Beattie, Head of Hospitality and Food Technology



This year, the Hospitality department has been extremely proactive in the Pacific Lutheran College community hosting events such as The Boat Shed dinner and in-school restaurants and contributing to college-wide events such as Open Day and The Jazz Evening.

The annual Year 12 Boat Shed dinner was held in early June. Families, friends and staff came together to enjoy a three-course meal prepared and served by the students. Students were responsible for all aspects of the evening including invitations, menu design, reservations, and entertainment and preparing and serving the delicious food.

During Term 2, our Year 11 and 12 students hosted a series of restaurant-dining experiences during lunchtimes for our senior students and staff. This event was run on an alternating roster with students allocated to front of house, barista and serving duties or preparing and cooking meals. Due to its huge success, this series will run again during Term 3. In Term 2, our Year 10 students hosted an Indian Day for all students and staff to enjoy. Students designed the Indian theme, created their own menu of curries and naan bread and cooked and served food at the event.

In March, our Music and Hospitality departments joined forces to host The Jazz Evening. The community enjoyed tasting plates, cheese platters and a glass of wine, whilst listening to our talented senior Jazz Ensemble. This event showcased the immense talents of our students and is destined to become an annual event.

The Open Day provided another great opportunity for our Hospitality students to showcase their skills through a pop-up restaurant. Students prepared, cooked and sold a variety of tasting plates and coffees to visitors on the day. The Year 11 students also hosted a cheese-making workshop and their products have now been entered into the Brisbane Exhibition Competition.

All activities in the Hospitality department aim to provide students with real world experiences where they are able to demonstrate their knowledge and understanding and further enhance their learning.

MUSIC CONTINUES ON A HIGH NOTE

By Mrs Aleisha Tuaine, Head of Music and Mr Adrian King, Head of Instrumental Music



What a brilliant start to the Music year we have seen in 2015. We have more students than ever involved in the program, with many learning new instruments and others participating in ensembles. We are so proud of our students.

In March, we were delighted with our senior musicians who provided the entertainment for the International Women's Day Breakfast. This is a popular annual event and our student performers gave a great presentation, which was well received by attendees and provided an entertaining program.

Another momentous event was Pacific Lutheran College's Jazz Evening, held in collaboration with the Hospitality department and the Friends of Pacific. This was a fantastic night, with the entertainment led by our Jazz Ensemble. Featuring students Olivia French,

Jessica Curreri and Timothy Lofthouse with two of our music tutors, Miss Jenna Wild and Mr Nelson Oakley, as soloists. The event was held in the Music Courtyard and showcased the fantastic work of both our musicians and Hospitality students.

In June, Miss Karlee Hutchinson led her String Ensembles and students in an afternoon recital, highlighting their hard work during Semester 1. Ms Lesley Seto and her piano students also celebrated their progress with an end of semester recital. As Ms Seto retired at the end of Term 2, the recital provided a great opportunity for her students to thank her for her dedicated approach to learning. Ms Seto was an important part of the Music department for many years and we wish her all the best in her retirement.

Finally, who can forget the amazing performances of the students who participated in the cast or orchestra of the musical, The Addams Family. This was a very large commitment for all staff and students involved, but the hard work and dedication paid off with a hugely successful performance. We look forward to ending the year on a high note as we did this semester.

RENEWABLE ENERGY & ELECTROTECHNOLOGY

By Mr Ian Learoyd, Head of Industrial Technology and VET

The last few years has seen continued change in Pacific Lutheran College's Industrial Technology department with new teaching staff and the continued refinement of our curriculum. The focus of the department has centred on the use of renewable energies and electrotechnologies.

To achieve the outcomes in our curriculum, students in some years have focused on the use of solar to power both their land and watercrafts. The Year 6 students have made and tested solar-boats with some of them even competing in a national competition, held in Maryborough late last year. The students have been very enthusiastic with this project and have enjoyed building their boats and testing the designs.

The solar cars project has continued to be part of the Year 11 curriculum. The design and construction of each car has reached exciting new levels in both technology and fabrication. By using carbon-fibre and innovative designs, students have been able to decrease the weight of the cars to just 350 grams. This is a huge development from the very first proto-type, which weighed in at a heavy 900 grams.

Graphics has been introduced into the Year 7 subject program and students have worked extensively with software before printing out their 3-dimensional design on our 3-D printer. This learning has been developed and expanded on in the senior Graphics program where students use the software and laser cutter to produce amazing outcomes.



THE EVOLUTION OF INFORMATION TECHNOLOGY

By Mrs Janine Stone, Head of Information Technology

The world of Information Technology (IT) is constantly evolving and the IT curriculum at Pacific Lutheran College has the challenge of enabling students to thrive in an environment of constant change and progress. The IT department encourages adaptive thinking through the design and creation of tangible products that function in the real world.

When you are realising a design, you are creating through a series of stages that are the basis of further learning. This is the core of the Software Development Cycle used in the IT department at Pacific Lutheran College. The Software Development Cycle, (plan, build, test, refine) is applied equally to programming, game development, 3D modelling, robotics, film editing, web development and information systems.

“THE IT DEPARTMENT ENCOURAGES ADAPTIVE THINKING THROUGH THE DESIGN AND CREATION OF TANGIBLE PRODUCTS THAT FUNCTION IN THE REAL WORLD.”

The evolution in IT is reflected in the improved computer skills in younger students. This has allowed us to introduce visual programming tools into the Junior College in preparation for higher-level computational thinking. Our Middle College students develop their →

thinking through identifying the computable aspects of a problem and using a modular approach to map out the solution sequences.

The main focus of our senior IT program is the design and development of 3D games and supporting software such as gaming forums and score sheet databases. We are using industry standard development tools and this year, we will be developing 3D games that can be experienced using Oculus Rift visors, which place the player in the created virtual world.



THINKING OUTSIDE, NO SQUARE REQUIRED

By Dr Peter McMahon, Head of Outdoor Education

Neuroscientist, Baroness Susan Greenfield states 'a sort of sedentary, screen-based existence has crept up on children. They used to be free-range and now they're practically battery children, living indoors, experiencing through the medium of a screen' (as cited in Hamilton, 2009, p. 29).

The Outdoor Education program at Pacific Lutheran College designs a learning environment that nurtures social connections, face-to-face communication and fosters a sense of belonging to a place. In an age where society must embrace technology, the risk of becoming a 'battery child' is very real. To provide a balance, students are offered experiences through outdoor education that assist the personal and social development that they may otherwise be missing.

There is nothing new about this concept. In 1938, Dewey argued that 'learning occurs through interaction. Learning in this sense is not something that happens in isolation, it is something that happens in relation to the individual who has the experience, the others involved, and the environment in which it occurs' (cited in Zink, R., 2013). The environment fostered at Pacific Lutheran College is one without walls; we enable students to be 'Thinking Outside'. Through involvement in planned, developmental activities and problem solving, individuals will experience positive change.

This generation is known as the 'connected generation', but to achieve this they have disconnected from many other things, one of those being the bush! Pacific Lutheran College's outdoor education program assists students to appreciate and care for their physical world by being outdoors.

Thinking Outside, No Square Required is the term coined by our Outdoor Education department and refers to the emotional, physical, psychological, environmental, personal benefits that students will reap. We challenge our teachers and students to ask 'are we active learners or passive watchers?'.



CAMBODIA TRIP 2014

By Miss Karen Schultz, Head of Service Learning

Pacific Lutheran College's relationship with the people of Cambodia was strengthened further through our Cambodia trip in December last year.

A key aspect of this project is our connection with the Lutheran Church of Cambodia. The church, strongly supported by the Lutheran Church of Australia and Lutheran World Mission, runs a hostel for tertiary students in Phnom Penh. We spent a number of evenings in fellowship with the hostel students, renewing old friendships and forming many new ones. The Lutheran Church of Cambodia also operates a centre in the village of Phum Krus in Kampong Chhnang province. We spent time with the young people who visit the Life Centre to learn English and computer skills and also visited a number of local primary schools, which the Life Centre works with.

The majority of the funds we raised throughout last year went towards purchasing 14 laptops. The hostel students were given some of these laptops to assist in their studies and the others were donated to the Life Centre to help with their programs, so that those who live in rural areas will have better job and study prospects. Pacific Lutheran College is working with LCA Mission International to find ways we can further support their work in Cambodia, particularly in Kampong Chhnang Province.



During the trip, we also visited a number of key historical sites in Phnom Penh and Siem Reap, including the Tuol Sleng Genocide Museum (the former S-21 prison) and the Choeung Ek Genocidal Centre (the Killing Fields).

Visiting these sombre sites helped us to gain some insight into the country's grave history and understand why Cambodia is still a developing country today. We also visited the temples of Angkor, sites the Cambodian people are very proud of, as they serve as a reminder of the great nation that Cambodia once was and that they hope to become again.



WORLD'S KOOKIEST FAMILY BROUGHT TO LIFE BY PACIFIC LUTHERAN COLLEGE

By The Production Team



There is something deliciously enticing about flipping 'normalcy' on its head and Pacific Lutheran College's recent production of the hit Broadway musical, 'The Addams Family', did it in style!

A cast and crew of 60, a professional orchestra of 15 as well as dedicated staff and parents combined to deliver a dynamic performance featuring brilliant music, a comical, dry, and witty script to a sell-out crowd at The Events Centre, Caloundra.



Set in the dreary Addams household, adorned with creepy crawlies and spooky cobwebs, the set reflected the decrepit, macabre mansion from the cartoon series. The musical featured the whole Addams Family including Gomez, Morticia, Uncle Fester, Grandma, Pugsley, Lurch, Thing and Cousin Itt. The main story centred on Wednesday, who had fallen madly in love with a 'normal' beau.

The underlying messages throughout the production were relevant to everyone. Not only did The Addams Family allow audiences to explore fears by laughing at them, but also the musical challenged the standard definition of 'normal'. When we witnessed The Addams Family cutting the heads off roses, moon bathing and their delight in being tortured, we had no choice but to immerse ourselves in their bizarre world and dark but harmless antics.

The Addams Family was a team effort of giant proportions. We salute all involved for their talent, enthusiasm and dedication in bringing this extraordinarily entertaining production to life.



COMBINING ACTION AND REFLECTION ACROSS PREP TO YEAR 5

By Mrs Sue Zweck, Head of Teaching and Learning K-5

Learning is both an active and reflective process. Though we learn by doing, constructing, building, talking and writing, we also learn by thinking about events, activities and experiences.

Because learning is so often subconscious, we do not realise we have actually gained new knowledge or understanding until we stop to contemplate a particular activity. Reflection is the vehicle for critical analysis, problem solving, synthesis of opposing ideas, evaluation, identifying patterns and creating meaning - in short, many of the higher order thinking skills that we strive to foster in our students. Across Prep to Year 5, opportunities for reflection occur before, during and after learning activities. This means students take note of their learning starting point, assess their progress during the unit and critically evaluate their own learning at the end of the activity.

Key to helping students reflect and make meaning of their learning is good, open-ended questioning designed to delve into the depths of student understanding. In addition to the 'what' questions, the 'why' and 'how' questions propel students towards broader and deeper understandings and encourage them to actively participate and evaluate their own learning.



The way our teachers create the atmosphere of the learning environment is as important as the questioning techniques. Our students feel comfortable sharing their views honestly and openly, as they know their opinions are valued. Our teachers strive to create an atmosphere of trust and respect and act as co-learners with the students. Teachers utilise action and reflection on a continual basis in a variety of formats including classroom activities and evaluations.

We place great value in our students as co-authors in conversations about their learning; these conversations contribute to developing their views about how they learn best and assist them to construct continuities of the learning that is valued at Pacific Lutheran College.

NEW YEAR 4 LEARNING SPACE

By Mr Terry Clark, Mr Damian Davis and Mr Doug Fitzpatrick, Year 4 Teachers

Our thinking around learning spaces continues to expand and incorporates the use of both physical and virtual space. This has meant a greater focus on the design and use of flexible learning spaces.

These ideas shaped the construction of our new Year 4 building and resulted in the learning space consisting of numerous areas that can be utilised in multiple ways.

The new flexible space has been instrumental in allowing students' voices to be heard and for children →



to be focused and take control of their learning. In our space you will see collaboration in groups, embedded technology use and opportunities for children to self-assess and give specific feedback to each other on their learning and thinking.

On the glass walls you will see examples of problem solving and reflection encouraging an environment for problem solving and critical thinking. You will see students moving seamlessly through spaces and instruction. The break out spaces provide the flexibility for our students to pursue their curiosity, to think and to express themselves as learners.

The physical environment has long been viewed as a vessel of 'where' learning takes place. Our new space provides a structure that is not removed from this, but rather integral to the overall success of the curriculum. The litmus test of any new venture is the motivation and success of its participants. This year's class is enjoying the new experience enormously and this is evident in the excited chatter and enthusiasm amongst the students and parents.



RECYCLING AND SUSTAINABILITY

By Mr David Druery, Head of Staff and Students P-5

The environmental footprint of a school can be quite substantial. When a large group of individuals gather daily in one location, the environmental implications for water usage, electricity and rubbish generation and disposal can be significant.

At Pacific Lutheran College, in an attempt to minimise our environmental impact, initiatives such as the collection of rainwater, the generation of electricity through solar panels, a recycling and sustainability program and a TravelSmart program are important.

This term, the Junior College waste-recycling program will expand to enable onsite processing of organic waste (generated from lunch scraps, paper towel and other organic waste generated on our grounds) into compost. The compost will be used on gardens throughout the grounds and any excess will be available to the wider community. Initially, an audit was conducted to determine how much organic waste we generated weekly. The audit revealed that almost 70% of the waste each week was organic in nature. Action is now in progress to install an on site composting apparatus (OSCA), which turns this organic waste into clean, usable compost.

As part of the recycling and sustainability philosophy, separate bins for organic, recyclable and non-recyclable waste are also available in all student eating areas. In classrooms, two bins are provided for recyclable and non-recyclable waste.

Developing a social culture of sustainability begins in childhood. By involving students in the practical application of a philosophy, Pacific Lutheran College can help students grow into adults who practice simple forms of waste

management and recycling. Individually, we may perceive our actions only make a small difference but collaboratively as a community, the impact can be immense.



**DEVELOPING A
SOCIAL CULTURE OF
SUSTAINABILITY BEGINS
IN CHILDHOOD."**



PLAY IS A CHILD'S WORK

By Mrs Julie McCosker, Pacific Early Learning Service Leader



“As astronauts and space travellers, children puzzle over the future; as dinosaurs and princesses, they unearth the past. As weather reporters and restaurant

workers, they make sense of reality; as monsters and gremlins, they make sense of the unreal.” - Gretchen Owocki

In early childhood, play provides the context for children's learning and this is deeply embedded into Pacific Early Learning's framework. Through play, children develop a sense of self, autonomy and their place in the world. They think, they guess, they talk, they listen, they try, they do, they risk and as a result they learn. Play is a child's work.



Children move and learn how to use their muscles, they connect what they see and what they do and they gain physical competence. Children hypothesise and test their ideas. Children explore their world and the greater community.

Children acquire new skills and learn when to use them. They cope with complex and connecting emotions by re-enacting real life. They test their spirituality and their belief systems.

Children progress from playing alone, to playing alongside other children to being cooperative. Quality early childhood education and care programs such as Pacific Early Learning ensure that children are supported and challenged to foster their holistic development. Quality teachers and educators with individualised programs ensure that children develop a healthy curiosity for the world around them and a love of learning. This love of learning continues to be fostered at Pacific Early Learning to ensure that children stay engaged for the remainder of their scholastic career.

(Source: Concepts from Developing in the Early Years.)



SPORT AT PACIFIC LUTHERAN COLLEGE

By Mr Mark Hauser, Head of Sport

Sport is continuing to grow and develop throughout all levels of Pacific Lutheran College. As well as students participating in our inter-house carnivals (swimming, athletics and cross country), we have seen a vast increase in the number of students participating in extra-curricular team sports.

This year, we have more teams than ever in both Sunshine Coast Independent School Sport Association (SCISSA) and the Sunshine Coast State School sporting fixtures.

In the Junior College, students have opportunities to compete in school teams for the SCISSA competition, Friday night Club Basketball, Saturday Club Netball, Thursday Junior Basketball Program, Saturday Club Soccer, Auskick clinics, Rookies to Reds Rugby clinics, Dance and Club Kayaking championships. →



This year in the Middle and Senior College, students have also competed at a higher level across a range of sports. We have seen a growth in team numbers for volleyball, netball, basketball, kayaking, dance, soccer, water polo and touch and have introduced a wider range of club sporting opportunities to continue strengthening our athletes. We have already seen many finals appearances for a variety of teams in the first half of the year including volleyball, rugby, soccer, netball and touch teams.

The increased participation in sport is a great testament to the passion and involvement of our coaches who assist in developing programs that grow student's skills and strengthen their abilities.



“ THE INCREASED PARTICIPATION IN SPORT IS A GREAT TESTAMENT TO THE PASSION AND INVOLVEMENT OF OUR COACHES WHO ASSIST IN DEVELOPING PROGRAMS THAT GROW STUDENT'S SKILLS AND STRENGTHEN THEIR ABILITIES.”



NETBALL

By Mrs Leigh Drogemuller, Teacher In Charge of Netball

Netball continues to be one of the fastest growing sports for Pacific Lutheran College and the Sunshine Coast. This season, a record 170 teams participated in the Secondary School's Netball Competition, held on Monday nights, with our squad expanding to six teams.

Following the success of last year, the focus for this season was movement down the court, and in defence, restricting space for the shooters. With such a large number of teams in this year's competition, some of our teams were graded into higher divisions resulting in a tough season for the girls. Throughout the season all teams stepped up, trained harder, set goals and went on to achieve many victories!



This year, our Year 7 team (PLC 6) remained top of the ladder in their division and took out the grand final against St Andrew's Anglican College, scoring 16 goals to 14. All Pacific Lutheran College teams and players should be commended for their efforts and enthusiasm throughout the season. Our coaches and parents should also be recognised, as they provide our teams with unfaltering support and encouragement that boosts everyone's spirits.

In addition to the Monday night netball competition, we also entered two senior girls teams in the Vicki Wilson Cup on 30th July. The teams trained hard since Week 5 of Term 2. The Vicki Wilson Cup is a high-level competition run throughout Queensland where teams compete against other schools in their sport region.

ARMIDALE RUGBY TRIP 2015

By Mr Darren Hooper, Head of Junior Sport



In April, a team of Year 6 and 7 Pacific Lutheran College students attended The Armidale School Rugby Carnival in northern New South Wales. The competition is the largest U13's rugby carnival in Australia and provides a great opportunity for our students to test their skills in a high-quality carnival environment.

On the first day, our team played four shortened games against some very experienced rugby schools and clubs from New South Wales. We lost our first and second games against two strong opposing sides, Cranbrook School and St Pius X. After their initial losses, our team was eager to turn things around and build some

confidence amongst the players. During the midday break, we were able to reflect on earlier games and work on some defensive strategies to improve their performance.

When the students next took to the field they were a completely different team! In the afternoon, against Lismore City Rugby Club, the team was able to dominate the game with strong defence. The match was tight, but both teams were unable to capitalise on scoring opportunities resulting in a draw. In the final game for the day we played against a notably strong Sydney rugby school, Shore College. Our team played outstandingly in a tough, nail-biting match, resulting in a win for Pacific Lutheran College!

By the second day of competition, the Pacific Lutheran College team was refined, confident and eager for another win as they took to the field. We scored four quick tries against Redfield College and kept a commanding lead the entire match, taking the game 31-0!

It was fantastic to see our team improve with each game and by the end of the weekend Pacific Lutheran College had recorded two wins, a draw and two losses. The team should be commended for their sportsmanship, perseverance and spirit.

PACIFIC LUTHERAN ALUMNI

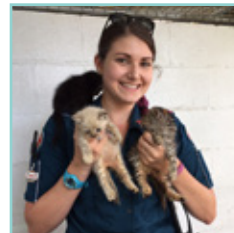


By Emma McGuire, Class of 2005

I graduated from Pacific Lutheran College in 2005 as a foundation student. I went straight on to study a Bachelor of Physiotherapy with Honours at the University of Queensland (UQ). During my degree, I was also competing at an elite level in Muay Thai Kickboxing and in 2007 I won an Australian title.

When I graduated from UQ, I moved to Rockhampton for my first job as a physiotherapist. In Rockhampton I worked in a private practice while also servicing the Mater Hospital and a local sport team. In 2012, I moved to Brisbane and started work at Arana Hills Physiotherapy.

Since I finished school, I have been very fortunate to travel, visiting Europe, USA, Canada, Asia and Bhutan in the Himalayas. I am no longer kickboxing, as being a physiotherapist with a black eye was never a good look! Now, I enjoy playing Touch Rugby League (TRL) and going to the gym.

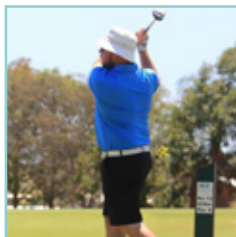


By Ashleigh McCormack,
Class of 2005

Since finishing at Pacific Lutheran College in 2005, I transferred between a few university degrees before finally graduating with a Bachelor of Paramedic Science in 2013.

Throughout this degree, I worked on placements at Buderim, Kawana and Maroochydore ambulance stations. In my final year, I was also given the opportunity to work on a casual basis throughout the Sunshine Coast region. This region is huge and covers Beerwah to Tin Can Bay – I have never seen so much of the place I grew up in! During my last year of university, I volunteered in the first aid tent at the Pacific OCEANfest. It was great to get to see the college again and I cannot believe how much it has grown.

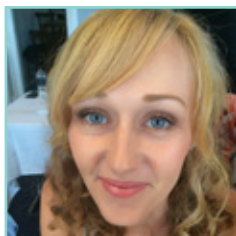
After leaving university, I obtained a graduate position with the Queensland Ambulance Service in Cairns and am now working as an Advanced Care Paramedic II in Innisfail. Outside of work, I have been enjoying the outdoors and exploring the local beaches and rainforest. I regularly go running and am trying to get back into netball. I live with my boyfriend of four years, our cockatiel and our two cats. I am very much looking forward to seeing everyone later this year at our reunion event!



By Nathan Freyling,
Class of 2005

Since graduating from Pacific Lutheran College in 2005, I have had the opportunity to do many things. In 2006 I became a PGA Trainee completing a business, coaching and sports science degree while competing

in professional golf events all over Australia. During the three-year traineeship, I was ranked in the top 10% of trainees in Australia. From 2009 until 2011, I played golf full time as well as coached at the Caloundra Golf Club. Since 2011, I have lived in Blackwater where I am a coal miner; operating heavy machinery at the biggest open cut mine in the Southern Hemisphere. I am still actively involved with golf and for the past 3 years I have been President of the local country club. I am also Blackwater's local golf professional and have run their award-winning program for the past four years.



By Emma Pentland,
Class of 2005

After graduating from Pacific Lutheran College as a foundation student, I went straight to university to study a Bachelor of Arts and thoroughly enjoyed it! When I graduated I went overseas for a year,

travelling around London, Europe and Scotland. On my return home, I moved to Sydney where I worked as a Graphic Designer. After exploring the big smoke, I moved to Brisbane and continued my work as a Graphic Designer. I then found myself back at university again studying an intense Post Graduates degree in Education while working as a freelance designer. I have now been working as a teacher in Brisbane for three years and I am about to embark on my next adventure, my rural teaching service. Time stops for no one, make the most of opportunities that arise!



By Jodie Stephens,
Class of 2005

English was my favourite subject at school and after graduating from Pacific Lutheran College I studied a Bachelor of Journalism at the University of the Sunshine Coast. In 2011, I was named best regional university student

at the Queensland Clarion Awards. For roughly four years now, I have been working as a print and online journalist at The Examiner newspaper in Launceston, Tasmania. As a general reporter I cover everything from events, local and state politics, social affairs, rural issues, the arts and all things colourful and quirky. In 2014, I was named best new journalist at the Tasmania Media Awards. More recently, as the paper's health reporter, I have covered stories relating to the Tasmanian health system, including the federal election and two state budgets. No day is the same and I have spent shifts at the local emergency department, on the road with paramedics, playing with lions and at a state budget lock-up in the Premier's office.

Outside of work, I try to travel whenever I can and have visited Canada, Cuba, Mexico, Iceland and France.



By Myeong Waterhouse,
Class of 2005

After graduating in 2005 I went straight on to study Business and Creative Industries at QUT in Brisbane. I have since changed direction and travelled, taught English in China and also spent a year living and studying

in Seoul, South Korea. I will soon graduate from Griffith University with a Bachelor of Law and a Bachelor of Government and International Relations with an aim to go into human rights law.

By Jessica, Class of 2005

After graduating from Pacific Lutheran College in 2005 I went straight onto university and completed a Bachelor of Social Work. Whilst completing this degree, I had several opportunities to travel throughout North, Central and South America, Australia and the Pacific. During this time I was also employed in the disability sector and was able to complete a Certificate 4 in Disability Studies. Over the last five years, I have been employed as a children's and family counsellor and specialise in the area of trauma. I have also been able to pursue my passion and love of horses and have even found a way to incorporate this into my profession. Through further study, I became certified as an Equine Assisted Psychotherapist. I look forward to growing my own Equine Assisted Psychotherapy practice in the future.

GRADUATING CLASS OF 2006

We invite Pacific Lutheran Alumni who graduated in 2006 (pictured), to make contact with the college if you are interested to lead the organisation of your 10-year reunion event in 2016.

Please contact the Middle/Senior College Administration Office on (07) 5436 7315. We look forward to celebrating this milestone with you.





COMPASS REVIEW 2015

Call 5436 7300
Woodlands Boulevard,
Meridan Plains 4551

www.pacificlutheran.qld.edu.au



PACIFIC
LUTHERAN
COLLEGE

Together we grow for a better tomorrow.